

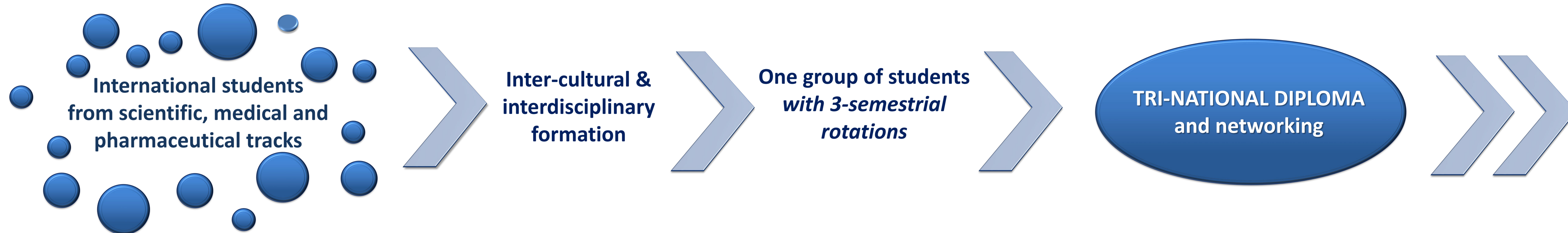
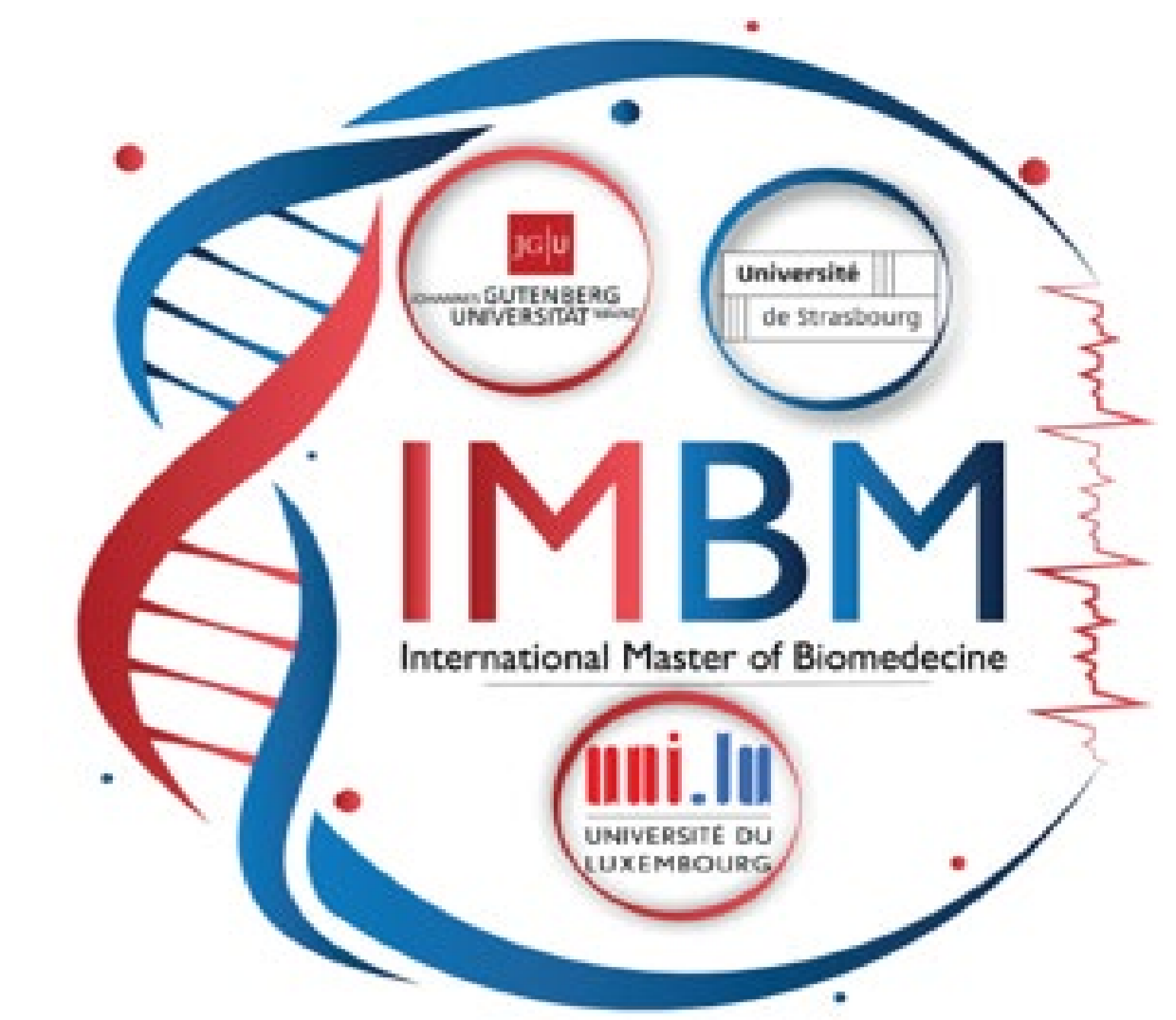
International Master of BioMedicine

**Recruitment
2025-2026**



Non-EU students: March 1st - April 20th 2025

EU students: March 1st - May 18th 2025



INTERNATIONAL CAREER

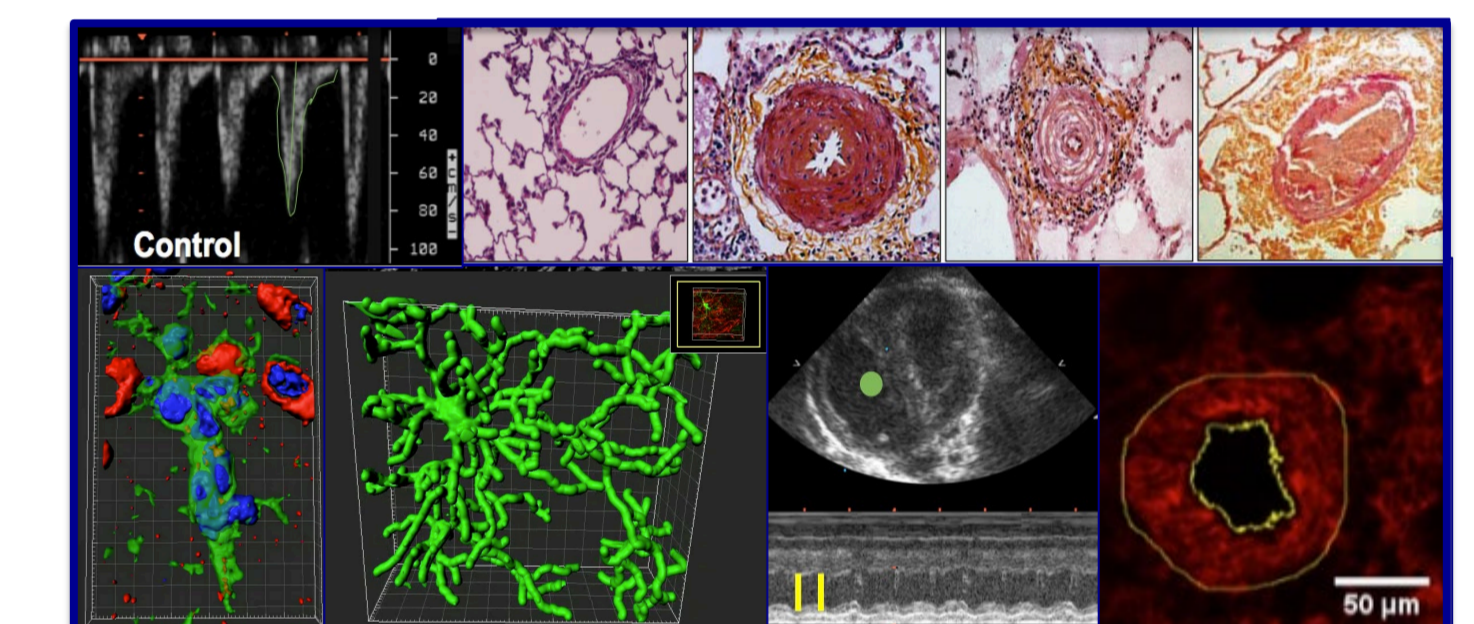
- R&D therapeutic, diagnostic, devices
- R&D health products, nutrition
- Pharmaceutical industries, start-ups
- Academia
- Medical agencies

Year 1 (M1)		Year 2 (M2)	
Semester 1: Université du Luxembourg	Semester 2: Université de Strasbourg	Semester 3: JG Universität Mainz	Semester 4
Mandatory courses: 15 ects	Mandatory courses: 24 ects	Mandatory courses: 24 ects	Mandatory: 30 ects
Academic induction 30h 2	Molecular pharmacology 28 h 3	Human neurobiology + Research project in neurosciences 105 h 12	6-month international internship (academic or private laboratory)
Safety in the laboratory 35 h 3	Cell responses: from receptors to signaling 28 h 3	Approaches and applications in molecular medicine and clinical immunology + research project in mol. med. & clin. immunology 105 h 12	
Genomics / Databases 70 h 5	Biological responses: from targets to treatments 28 h 3		
Gene Regulation / Transcriptomics 50 h 5	Initiation to pre-clinical research (internship 105 h) 3	Optional courses: 6 (3 x 2) ects	
Foreign language (F/D) 40 h --	Molecular vascular medicine and cardiology 50 h 6		
Optional courses: 15 (3 x 5) ects	Optional courses: 6 (2 x 3) ects	Clinical radiation biology 21 h 2	
Practicals in gene regulation 70 h or 50 h 5	Therapeutic potential of stem cells 27 h 3	Scientific data formatting and editing 21 h 2	
Introduction to systems biology 70 h or 70 h 5	Introduction to drug delivery and nanobiomedicine 28 h 3	Personalized oncology 21 h 2	
Proteomics 70 h or 70 h 5	Cardiac and vascular regenerative medicine 24 h 3	Experimental animal course (FELSA) 21 h 2	
Pharmacokinetics 70 h or 70 h 5	Genetically modified experimental animal models 24 h 3	Foreign language 21 h 2	
Translational biomedical research 70 h	Foreign language		
Contacts	Contacts	Contacts	
Managers T. Sauter: thomas.sauter@uni.lu L. Sinkkonen: lasse.sinkkonen@uni.lu	Managers V. Schini-Kerth: valerie.schini-kerth@unistra.fr F. Toti: toti@unistra.fr	Managers K. Karram: karram@uni-mainz.de N. Hövelmeyer: hoevelme@uni-mainz.de	
Administration P. Paul: polina.paul@uni.lu Faculty of Science, Technology, and Medicine	Administration L. Fettous: fettous@unistra.fr V. Bruchmann: vbruchmann@unistra.fr Secrétariat de la Faculté de Médecine	Administration H. Mohr: hildmohr@uni-mainz.de Institut für Molekulare Medizin	

Courses starting dates

M1 mid-September 2025

M2 mid-October 2025



Education Program supported by IdEx/formation and UFA/DFH

Potential financial supports for students

- ❖ Université Franco-Allemande
- ❖ ERASMUS +
- ❖ Région Grand Est
- ❖ Initiatives d'Excellence (IdEx)

Assistance in acquiring accommodations (Luxembourg, Strasbourg, Mainz)

APPLY ONLINE 2025-2026

at Université de Strasbourg

e-candidat:

<https://ecandidat.unistra.fr/>



<https://www.uni.lu/fstm-en/study-programs/international-master-of-science-in-biomedecine/>

<https://www.studying.uni-mainz.de/biomedecine/>



Visit our web site:
<https://masterbiosante.unistra.fr/parcours/international-master-in-biomedecine>